

MÖSER

SINKS & FAUCETS

INSTALLATION MANUAL

HANDMADE COPPER APRON SINKS

models MCA2252S, MCA3322S and MCA3322D



Before starting, please carefully read installation and maintenance instructions. Inspect your sink for any noticeable damage before installation. Check all local applicable plumbing and building codes.

Because MoSER copper Apron sinks are individually handmade, we suggest using experienced and professional installers only. For custom cutting of countertop and installation of the actual sink, on-site installation is also recommended. Acceptable variances are approximately 1/4 of an inch. Alignment to the cut-out and precise application and trimming of any adhesive sealant are critical for a superior fit and finished look. Please take extra care when installing an Apron sink.

All MoSER Apron sinks require custom order cabinets. Consult your cabinet supplier to ensure proper fit. MoSER does not accept any liability for damage to your countertop, sink fixture, faucets or personal injury during installation. Warranty is void if installation instruction are not properly followed.

These instructions are based on application to composite material or solid surface countertop installation only; countertop application to stone, marble, quartz, granite or butcher-block should be referred to specialized countertop fabricators for custom fitting and installation.

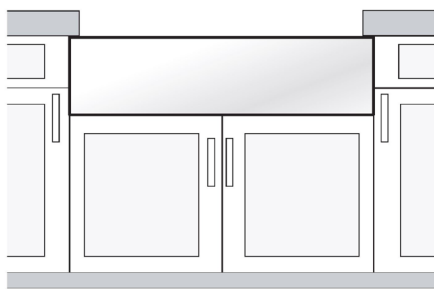
Tools and material you may require:

- » Hacksaw / Jigsaw
- » Ear Protection
- » Silicone Adhesive Sealant
- » Rags
- » Shims
- » Wood Braces
- » Pencil (NOT ink)
- » Denatured Alcohol
- » Tape Measure
- » Framing Square
- » Eye Protection
- » Level

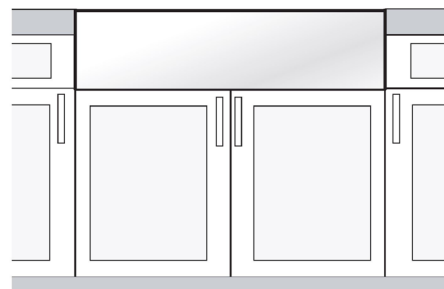
Be sure to use proper tools and always wear personal safety devices for your protection. Do not use plumbers putty on copper sinks.

Installation Options

MoSER Apron sinks offer installation options depending on your design.



FLUSHMOUNT INSTALLATION

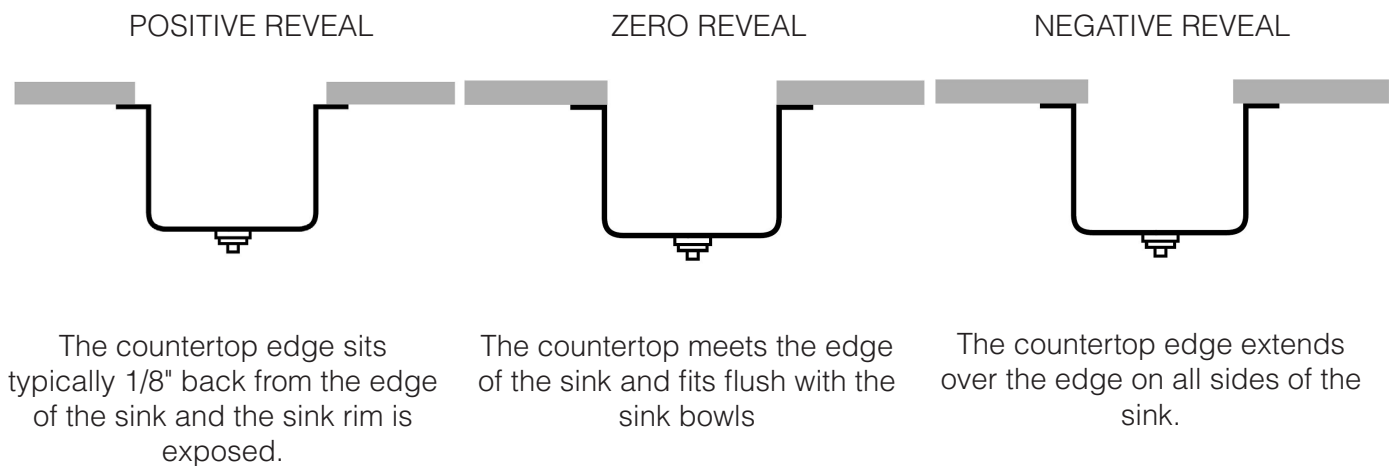


BUILT-UP INSTALLATION

CAUTION

All installation types need to allow room for faucet placement. Ensure adequate clearance behind the sink for any faucet and backsplash, as well as full range of motion for faucet spouts and handles.

For undermount installation, MoSER Apron sinks can have three different reveals – Positive, Zero or Negative. Each reveal creates a distinctive look where the countertop and sink meet (see diagram below). Deciding on your preferred look must be done prior to installation.



1. Prepare the Sink Base Cabinet

MoSER Apron sinks offer installation options depending on your design. Apron sinks require custom order sink base cabinets with a front cutout to accommodate the depth of the sink. Build a plywood platform on a support frame inside of the sink base cabinet. Platform must support the weight of the sink and any attachments such as garbage disposals. When the sink is placed onto a platform, make sure the top of the sink is evenly flush against the bottom of the countertop. Allow clearance for water supply line and drains or garbage disposal, as necessary. Set the sink on top of the cabinet or into the cabinet front cutout. Apply sealant if necessary as a gasket between the sink and cabinet.

2. Make a Template and Cutout

Depending on the installation option, make proper cutout of the countertop. MoSER recommends a Zero reveal on 3 sides when installed undermount style. For a flush mount installation, cut countertop along with outside line of the sink profile. No template is provided due to the custom nature of each application and installation so please take extra care before cutting. The actual sink should be used as the template guide for each installation. After centering the sink and allowing for any faucets and backsplashes, use a pencil to outline the sink as your guide for the cutout, allowing for any reveal before the actual cutting.

3. Set the Sink

Set the sink on top of the cabinet or into the cabinet front cutout. Apply sealant if necessary as a gasket between the sink and cabinet.

CAUTION

Wait 24h before reconnecting the plumbing.

The silicone or epoxy adhesive requires time to properly cure and set or sink position may shift.

Do not use plumbers putty on copper sinks.

4. Install the Countertop

Carefully clean bottom of countertop and top flange of sink with denatured alcohol. Apply bead of silicone adhesive (not supplied) around the top edge of the sink. Place countertop onto the sink. Remove excess sealant from the lip or any surfaces with a cleaner recommended by manufacturer of adhesive sealant.

Legal Disclaimer

All technical data and information provided in this publication is done as a public service to customers of MoSER Sinks and Faucets (MoSER) and consumers of its products. All names, designs, and model numbers of products are the property of MoSER. Prices and specifications of MoSER products are subject to change without notice or obligation. MoSER may also change or discontinue models of its products without notice or obligation. While MoSER endeavors to provide accurate information and descriptions of its products, accuracy and completeness cannot be guaranteed. MoSER is not responsible for, nor does it have any liability for any mistakes or typographical errors, including liability for incidental, consequential, or special damages. All products should be inspected and measured promptly upon delivery and certainly before any improvements or alterations are done in anticipation of or preparation for installation. MoSER assumes no liability for the use of such information or for any damages incurred through its use or applications.

Nothing contained in this publication is to be construed as contractual or providing any form of warranty or representation on the part of MoSER. MoSER MAKES NO WARRANTIES, EXPRESS OR IMPLIED, INCLUDING BUT NOT LIMITED TO ANY WARRANTY OF MERCHANTABILITY OR OF FITNESS FOR A PARTICULAR PURPOSE, AS TO THE INFORMATION CONTAINED HEREIN OR THE PRODUCTS DESCRIBED HEREIN.

